

### Local Support Services

- Agawam Housing Authority  
(413) 786-1297
- WIC Nutrition Program  
(413) 733-2158

### Clothing Assistance

- Love Center  
Bethany Assembly of God  
580 Main Street (413) 789-2930  
Hours: Tuesday 1:00pm-2:00pm  
Sunday 12:30pm -1:00pm

### Early Intervention

- Thom Westfield Infant Toddler Services  
(413) 568-3942  
Provides free evaluations for children age birth to 3 years.

### Food Assistance

- Food Bank of Western Mass.  
(413) 247-9738  
Agawam branch located at:  
Bethany Assembly of God  
580 Main Street (413) 789-2930  
Hours: Mon. & Friday 1:00-3:00pm
- Parish Cupboard  
(413) 734-7969  
1023 Main Street West Springfield  
Emergency Food Mon - Fri 9:00-11:15am  
Hot Lunch 11:30am-12:30pm
- Dep. of Transitional Assistance  
(413) 858-100  
Supplemental Nutrition Assist. Program

### Fuel Assistance

- Valley Opportunity Council  
(413) 552-1548
- Citizens Energy Corporation  
(877) Joe -4 -Oil  
(617) 338-6300

### Non-Emergency Medical Assistance

- Agawam Town Health Dept.  
(413) 786-0400 ext. 209  
Offers FREE immunizations for children
- New Covenant FREE Clinic  
(413) 363-0098  
1<sup>st</sup> Tuesday of every month  
Must be 18 or older

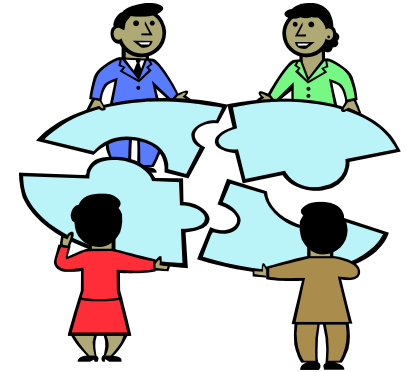
### Dental

- STCC Dental Hygiene Clinic  
(413) 755-4900  
Reduced fee services for all ages

### Additional Family Supports

- Safe Families (SFFC)  
(413) 263-0369  
[www.safe-families.org](http://www.safe-families.org)  
Provides support to families in times of crisis and need.
- Mass 2-1-1  
[www.mass211.org](http://www.mass211.org)  
Free access to health and human services information and referral.

# Agawam Family & Community Program



*Providing access to services and support, designed to strengthen families & promote optimal child development.*

*Michelle Connery  
Outreach Coordinator  
(413) 821-0597*

*Funding for the Coordinated Family & Community Engagement (CFCE) Grant provided by Massachusetts Department of Early Education & Care (EEC)*

## ★ Our Objectives

- To serve as a resource hub for all families, providing access to high quality education/care programs and services for families with children birth to 8 years.
- Promote family education, engagement and literacy through activities that:
  - Recognize parents as their child's first teacher.
  - Build on family strengths.
  - Bolster parental leadership.
  - Create parent opportunities for mutual support and social connections.
  - Build early and family literacy skills.
- Assist families during times of transitions: relocating, new baby, child care providers, schools, etc.



## ★ Programs Being Offered

The Agawam Family Community Program will be hosting the following events this school year:

- FREE Parent Workshops
- FREE Literacy Event
- Early Childhood Informational Fair, connecting families with support services in our community.

## ★ About EEC

The Massachusetts Department of Early Education & Care (EEC) provides early education, and out of school services for children in our state via public/private/non-profit providers. EEC is the lead agency responsible for licensing early education/care & out of school programs throughout the state.

## ★ The CFCE Grant

The Coordinated Family & Community Engagement (CFCE) Grant funding is provided by EEC. Through this grant, EEC provides families the ability to identify programs that will ensure their children are lifelong learners and, successful contributing citizens.

## ★ Child Care Center & Pre-Schools

- Bambi Nursery School & Day Care (413) 786-8325
  - Early Childhood Center (413) 821-0597
  - Head Start (413) 789-1784
  - The Kids Place, Inc. (413) 786-7980
  - Pam's Place Child Care Center, Inc. (413) 789-4987
  - Perry Lane Preschool (413) 789-1616
  - Smart Start Preschool, LLC (413) 786-0302
- ## ★ Home Child Care Providers
- Preschool Enrichment Team (413)736-3900  
Contact for a comprehensive list of licensed home child care providers.
  - The Mass. Department of Early Education & Care (EEC)  
[www.eec.state.ma.us](http://www.eec.state.ma.us)  
Provides a list of all EEC licensed programs by region.